

inspiration

# put the collar on clutter

These storage solutions will help you to disguise, shelve and stow your way to a more organized home.

PRODUCED BY AFIYA FRANCISCO  
TEXT BY MEREDITH BIRCHALL-SPENCER  
PHOTOGRAPHY BY MARK BURSTYN

**1** When this home office was created out of an extra bedroom, the closet was no longer needed for clothes, so the designer turned it into a space for the homeowners' files, photo albums, books and office supplies. The repurposed space — five feet wide and two feet deep — now features **built-in shelves, drawers, filing cabinets and even a ribbon board for loose papers.** Recessed lighting was installed inside to make finding papers easy. And it's all hidden behind new recessed-panel doors that coordinate with the room's traditional wainscoting. Design by Tara Fingold Interiors.



2

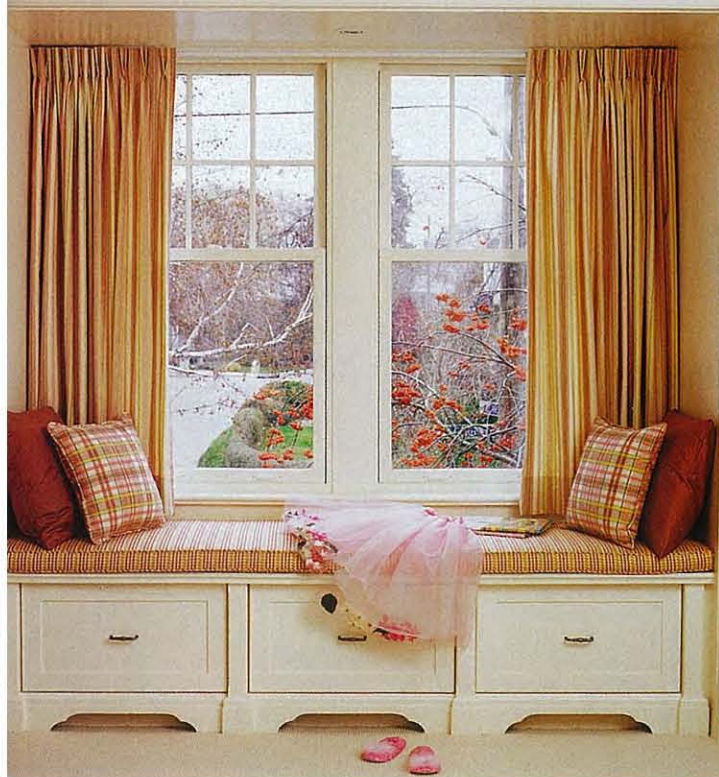
The designer of this master bath infused it with storage by **turning over an entire wall to handsome built-in cabinetry** in dark wengewood. The unit's frosted glass coordinates with the room's main door and contrasts the white fixtures (not visible) and rustic herringbone floor. Toiletries are easy to find in the eye-level upper shelves, while towels and a laundry hamper are tucked down below. Design by Connie Braemer Design; toiletries, Au Lit.



# disguise it

3

Located in a girl's bedroom, this simple Mission-style window seat not only turns a generous window into a pretty reading nook, but also helps keep clutter under control. Fronted with clean-lined Shaker-style panelling, the **seat's drawers provide handy and ample storage** for dress-up clothes and games. Cut-out bracket feet on the bottom of the built-in make it look like a piece of furniture and allow heat to escape from a vent below. Design by W.B. Abbott Design; shoes, skirt, book, Kol Kid.



4

This small condo's galley kitchen and open-plan dining room left no space for a buffet or hutch to store the homeowner's large silver collection, so **an unused pass-through was turned into a concealed storage area**. The 4'-x-2-1/2' unit has display shelves up top, storage shelves below and drawers to hold flatware and serving pieces. The piece is lined with Pacific cloth (a felt-like fabric) to protect the silver. Design by Tara Fingold Interiors.



5

The compact size — 4' x 3-1/2' — of this laundry room situated at the end of a hallway makes storage a challenge. An ironing board is an awkward thing to stow away, especially in such a tiny space. But **this handy board folds in half, opening out from the drawer** when needed and tucking neatly away when not in use. Usually a spot to fold laundry, the counter doubles as a bar when the owners entertain. Design by Tara Fingold Interiors; linen water, Au Lit.







**2 Substantial floating shelves in a small ensuite bath** add much-needed storage space without cramping the room's modest proportions, and add visual weight without detracting from the room's airiness. The contrast is a rustic contrast against the sleek white backdrop. The bottom shelf holds everyday supplies; baskets provide storage for extra towels and bring texture to the space. Design by Jennifer Cranston; accessories (except baskets), Au L

# shelve it

This built-in creates more space for a burgeoning library by **utilizing an entire wall, even unused space over the door.** The architect designed this unit, for his own 1,000-plus book collection, to cover the expanse of an entire 9'-x-18' wall in the guest room. The built-in also features a rounded shelf (lower left), which arcs 12" out into the room to serve as a handy bedside table for the adjacent bed (not visible). Design by Diamond and Schmitt Architects.

**3**

Flanking a fireplace with elegant built-in shelves can give a large living space a wonderfully inviting look. Here, the combination of beadboard and recessed panelling creates a refined modern-country look that lets the stone fireplace, a rustic focal point in this cosy room, take centre stage. The **upper shelves, spotlighted by lighting recessed in the panelled moulding**, provide ample room for books and display; cupboards below hide away games, toys and children's books. Design by W.B. Abbott Design; accessories, Hollace Cluny; large bowl, Constantine.







**4** Inspired by bookshelves found in British libraries, this unit maximizes storage by running the full width of the ample family room. The shelves are adjustable in height to fit various sizes of books as the collection grows

and changes. An oak library ladder with antique brass hardware and rail system complements the stately unit and the British-country-house look of the room, and echoes the dark ceiling beams. Design by Andrea Crawford Interior Design.

SEE SOURCE GUIDE

HOUSE & HOME M





**1** The owners of this 10' x 20' dressing space wanted it to be as beautiful as the other rooms in the house, so they had it fitted with decorative mouldings that match those in the master bedroom, and even a glittery chandelier. Stylish good looks aside, the room fulfills multiple storage functions. Every square inch has been utilized; there's **floor-to-ceiling shoe and purse storage, and shallow drawers with dividers to organize jewelry, lingerie and ties.**

While the designers had the homeowner count every last article of clothing before designing this space, designer Ann Johnston suggests "always planning for extra; you'll need more room than you think." Design by Ann Johnston Design Consultants and Murakami Design.







**2** This 13'-long unit in the busy entryway of a house is kept looking serene and uncluttered with **locker-style storage and baskets**. The lockers hide long coats and shoes, while the baskets — each designated to a specific family member — take care of bookbags and seasonal accessories such as mittens and hats. A bench seat is perfect for donning shoes and depositing handbags. The unit was built to a standard 24" depth, which made it easy to find baskets that fit. Design by Connie Braemer Design.



**3** Reminiscent of elementary-school classrooms, this Shaker-style unit has hooks for small coats and shelves for the accessories and bags of each of the homeowners' three children. Bottom drawers keep shoes out of the way. Cubbies and baskets hold sports equipment and toys. And the top cabinets store out-of-season apparel. **Keeping the unit doorless makes it easier for the children to find items and put them away.** Architecture by Bob Green; flooring by Joanne Smith; closet design by Carolyn Abugov Space Planning and Organization.

# stow it



**4** Creativity finds easy outlet in this crafts room, thanks to a built-in storage cupboard. Home to art materials, the top half is fronted with chickenwire, which allows the homeowners to quickly track down what they're looking for and lends a country-casual aesthetic to the unit. The space is also used as a wrapping room by the owner, so **the lower cabinets have deep slide-out drawers** for items like ribbon, tape and gift bags. Design by Ann Johnston Design Consultants and Murakami Design. **H&H**